

ArcheOPENLAB

Archaeological Citizen-science Project: Local & International Civic Inclusive Engagement

Javier Salido Domínguez & Lidia Vargas Moreno
Dpt. Prehistory & Archaeology



INTRODUCTION

ArcheOPENLAB is an Open Laboratory initiative led by the **Universidad Autónoma de Madrid** and coordinated by Prof. Javier Salido Domínguez, in collaboration with the **National and Kapodistrian University of Athens and the University of Bucharest**. This International Project aims to transform archaeological sites into dynamic spaces for engagement between the public and the academic community—places where knowledge is shared and educational, cultural, and economic opportunities are created.

SERVICE-LEARNING OBJECTIVES

The aim is to create **collaborative, inclusive, and creative spaces** where the public actively participates in archaeological processes, integrating archaeological sites into the social and economic life of their local communities. Thanks to its international scope, the project facilitates the exchange of best practices among universities from different European countries, strengthening academic cooperation and promoting the transfer of knowledge **from the University to Society**.

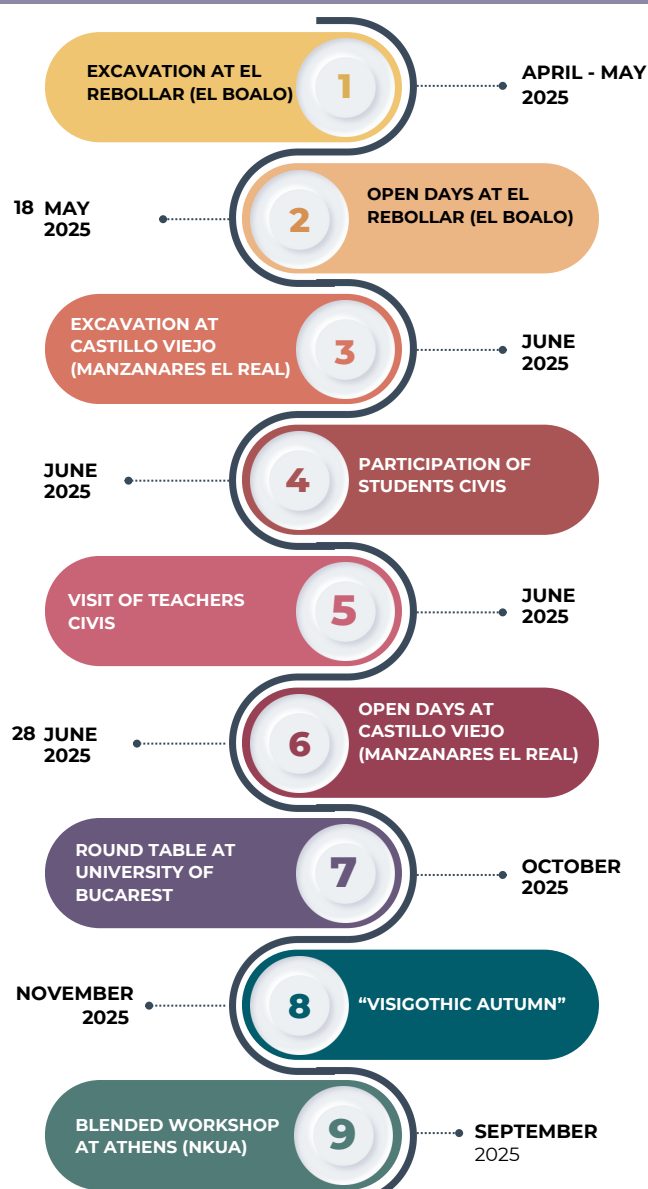
COMMUNITY – ORGANIZATIONS

ArcheOPENLAB involves undergraduate and Master's **students** in Archaeology, History, and Heritage Studies, as well as **Faculty members and researchers** from the participating universities. In addition, it actively engages local **residents** from the municipalities where the project takes place (Manzanares El Real and El Boalo), **cultural associations, schools, and vulnerable groups**—such as people with **functional diversity**—through collaboration with organizations like APADIS.

National, Regional and Municipal Administration, Universities and Society working towards the same goal of advancing experiences and initiatives related to Public Archaeology.



ACTIONS – TIMELINE



BENEFITS AND IMPACT

In the educational sphere, the project offers a unique service-learning experience within its field, combining theory, practice and social engagement. At the community level, it contributes to **sustainable local development**, promotes the inclusion of traditionally **marginalized groups**, and transforms heritage into a shared and accessible resource.



The project also stimulates the **local economy**, encourages responsible cultural tourism, and fosters new forms of democratic participation centered around Heritage.

CONCLUSION

ArcheOPENLAB is a transformative initiative that shows how Archaeology can be much more than an academic discipline. By placing Heritage at the service of people, the project helps **build a more equitable, aware, and cohesive society**.

Thanks to its **international, inclusive and collaborative** approach, ARCHEOL stands out as a benchmark in the field of Public Archaeology and as a **transferable model of social innovation rooted in the Humanities**.

